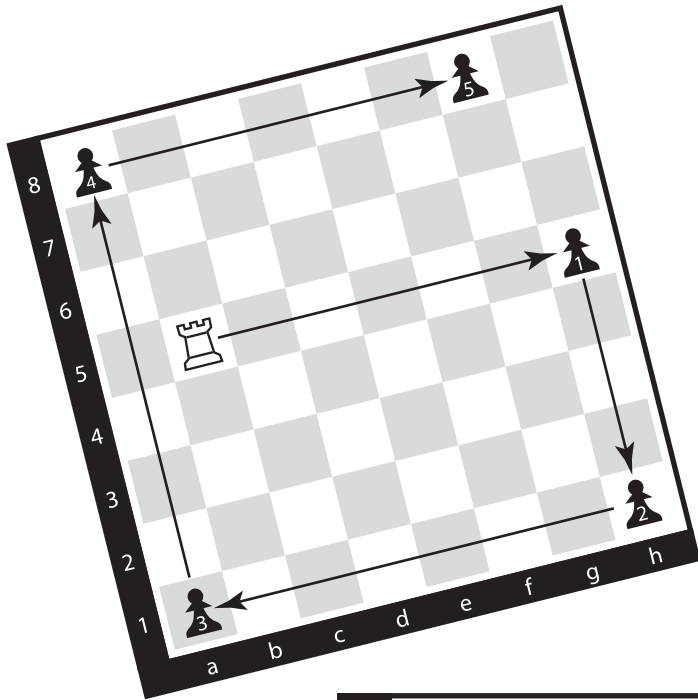


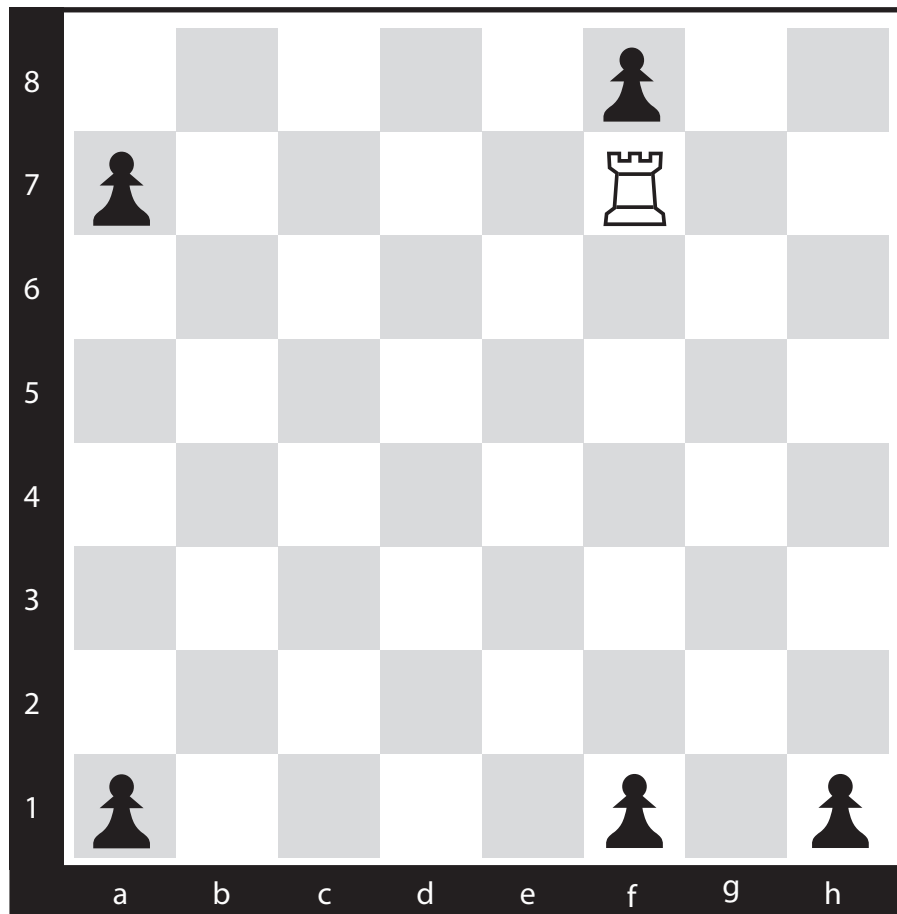
PAWN MOWER

INSTRUCTIONS



Use the rook to eliminate all the pawns on the board. A rook moves vertically and horizontally. It can get rid of all five pawns by moving right, then down, then left, then up, and, finally, right. Five pawns, five moves. An efficient way to describe this is by writing the moves out like this:

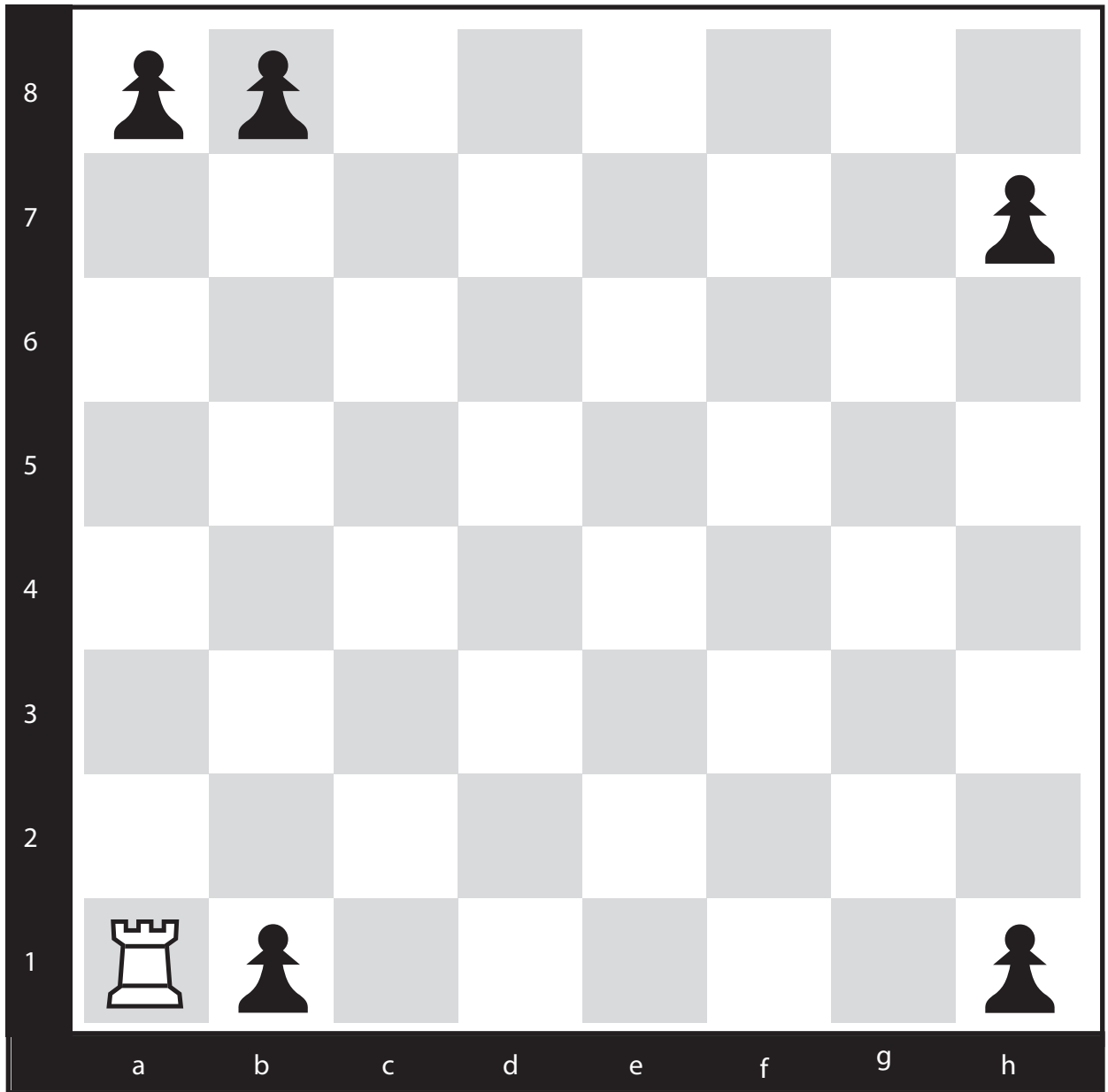
h5 h1 a1 a8 g8



S
A
M
P
L
E
P
U
N
N
L
S

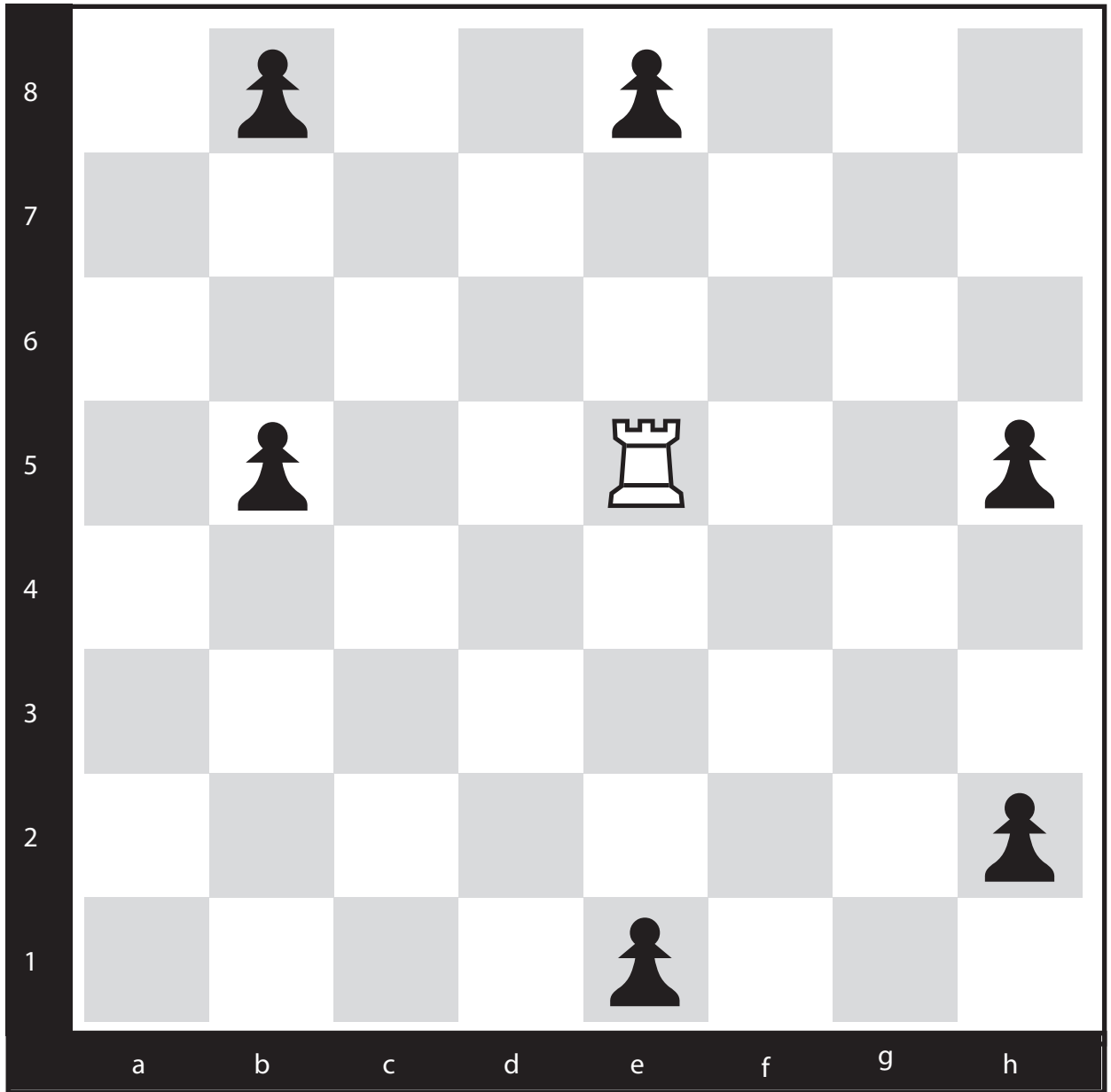
1. _____

♖5



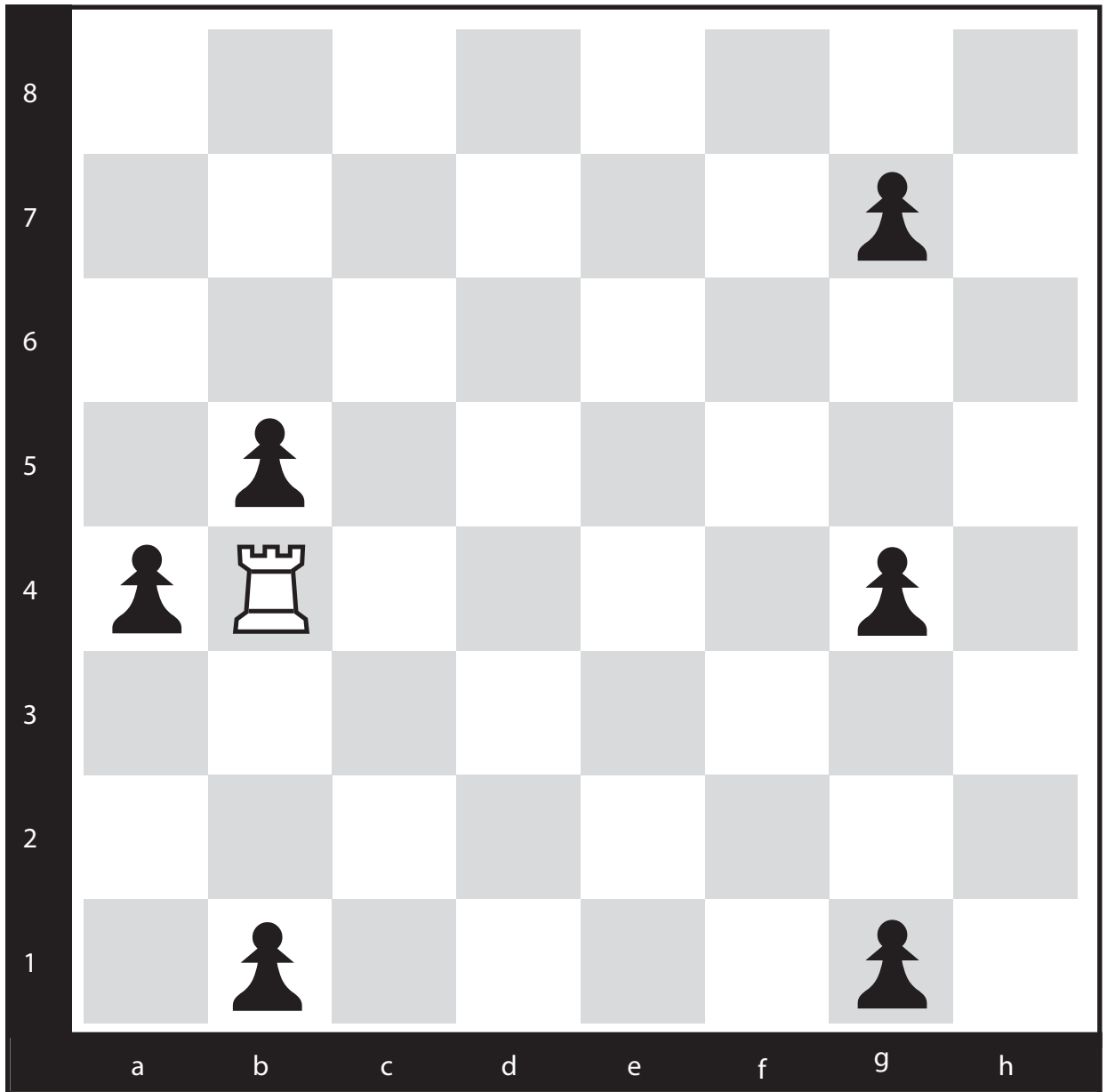
2.

Rook 6



3. _____

6



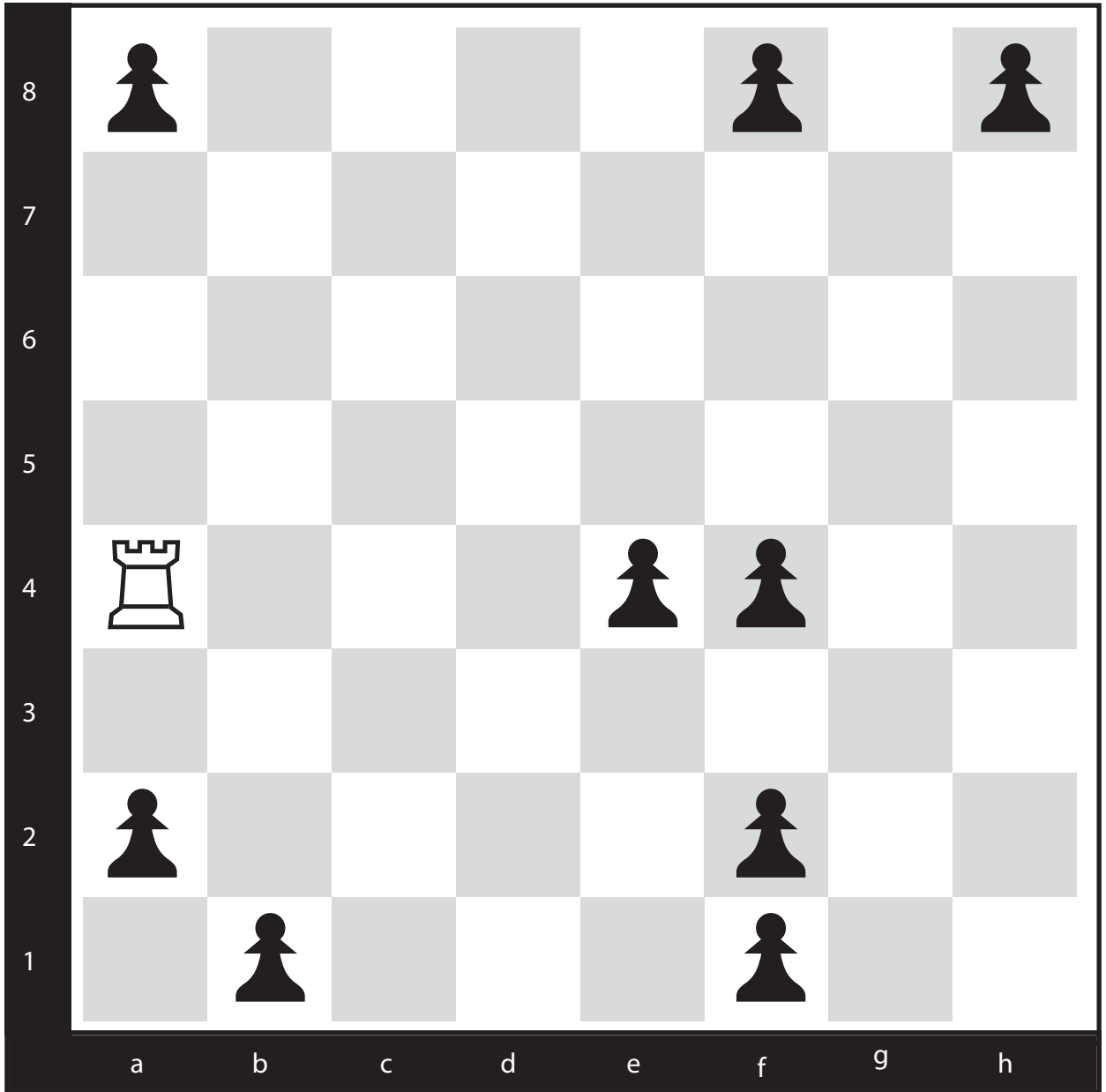
4. _____

Rook 7



5. _____

Rook 9



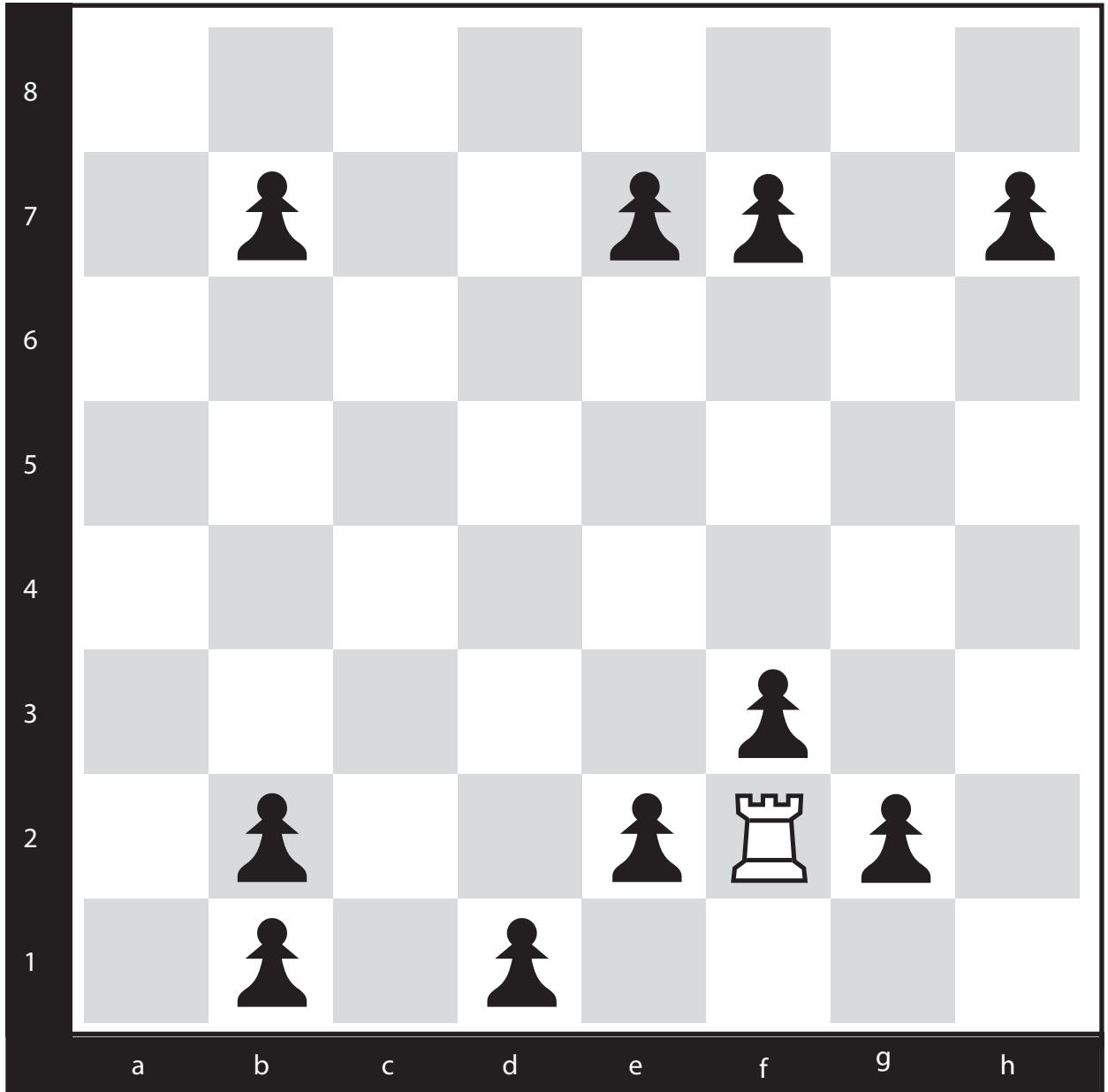
6.

Rook 9



7.

10



8.

18



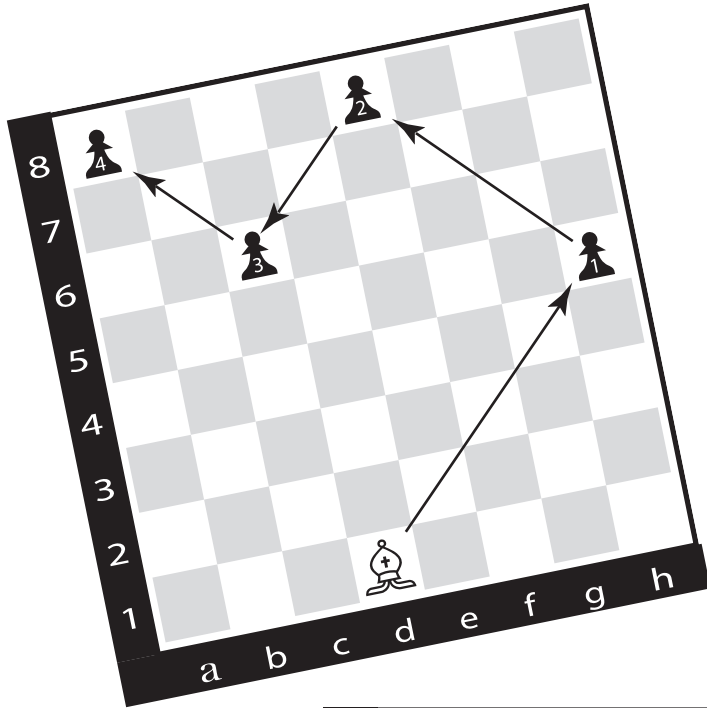
9. _____

ANSWERS FOR ROOK PUZZLES

1. f8, f1, h1, a1, a7
2. a8, b8, b1, h1, h7
3. e1, e8, b8, b5, h5, h2
4. a4, g4, g7, g1, b1, b5
5. c1, g1, g7, a7, h7, h2, f2
6. e4, f4, f8, h8, a8, a2, f2, f1, b1
7. d3, d5, g5, g7, a7, h7, h5, b5, b1
8. f3, f7, h7, e7, e2, g2, b2, b7, b1, d1
9. b7, b1, c1, d1, d3, d6, f6, f8, f2, h2, c2, c5, e5, a5, a7, a3, g3, g4

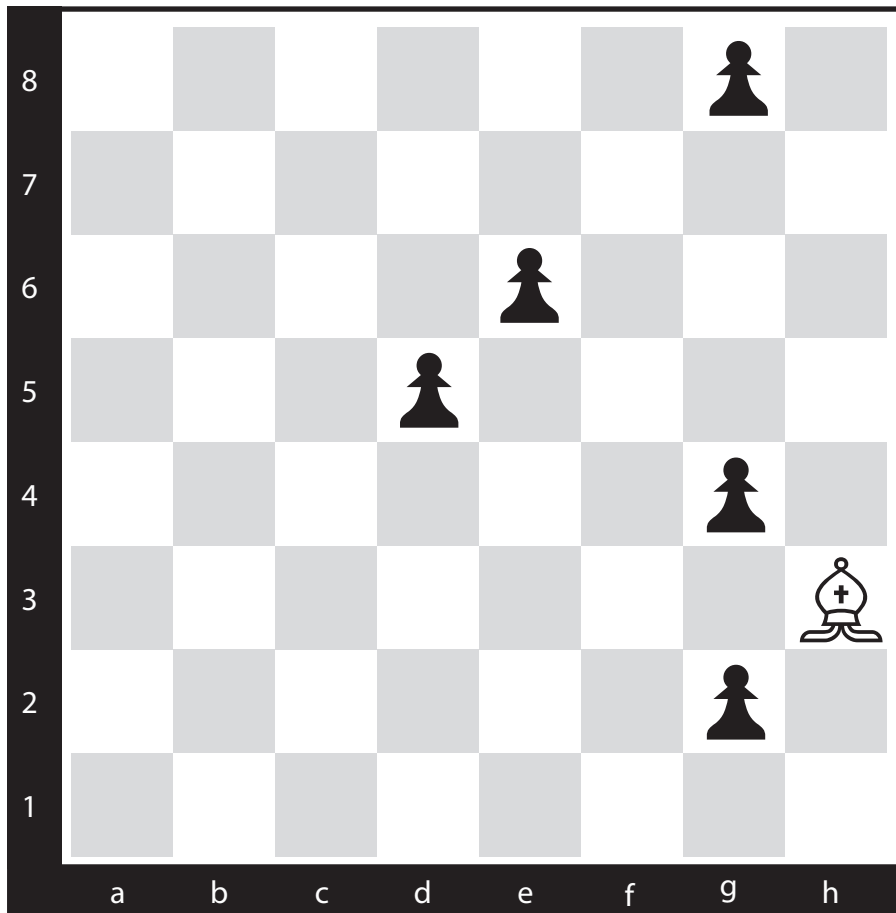
PAWN MOWER

BISHOP INSTRUCTIONS



Use the bishop to eliminate all the pawns on the board. A bishop moves diagonally, in any direction. It can get rid of all four pawns by moving diagonally up and right, then down and left, and, finally, up and left. Four pawns, moves. An efficient way to describe this is by writing the moves out like this:

h5 e8 c6 a8



S
A
M
P
L
E

P
U
N
N
I
E
S

1. _____

5



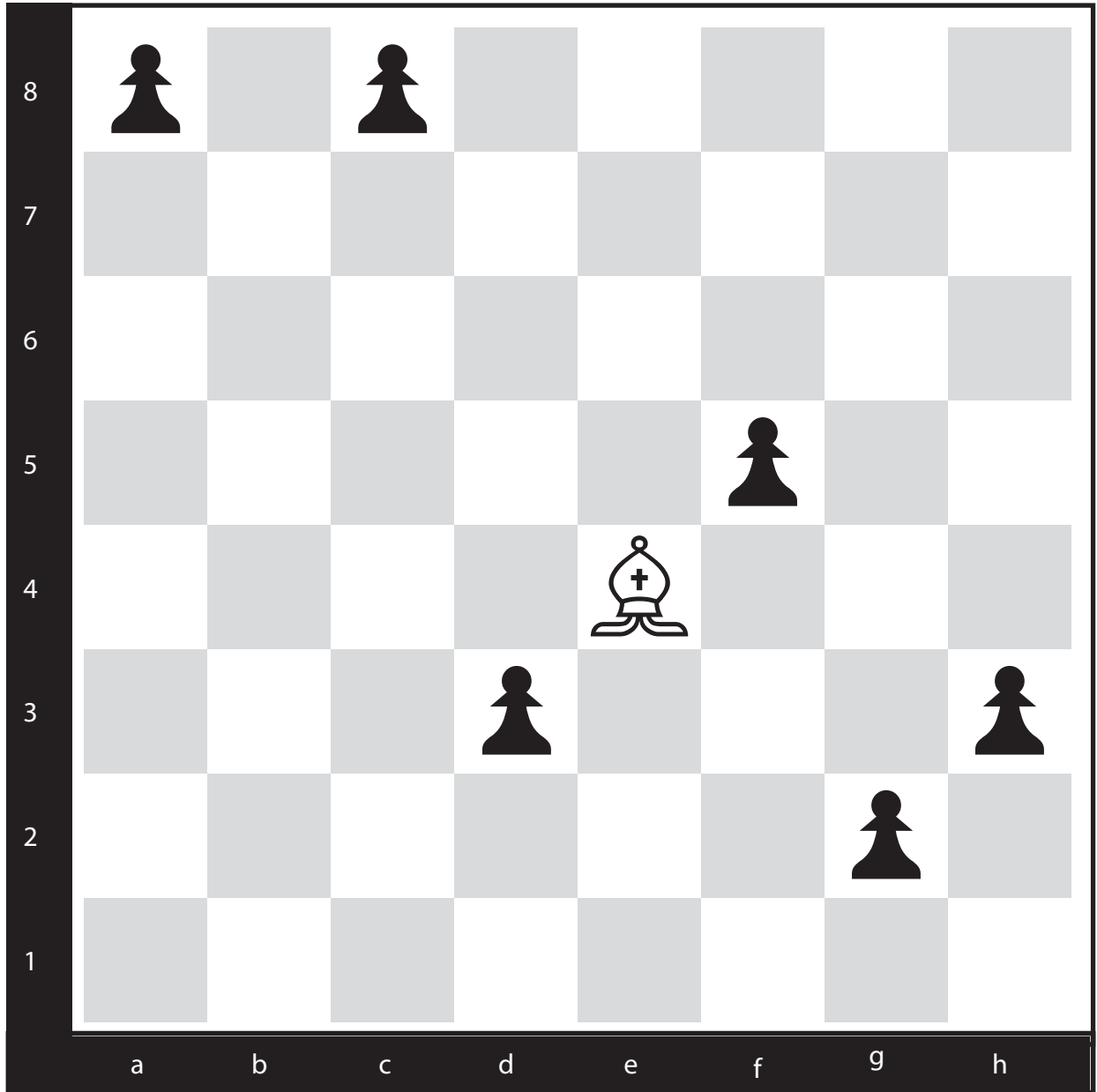
2.

6



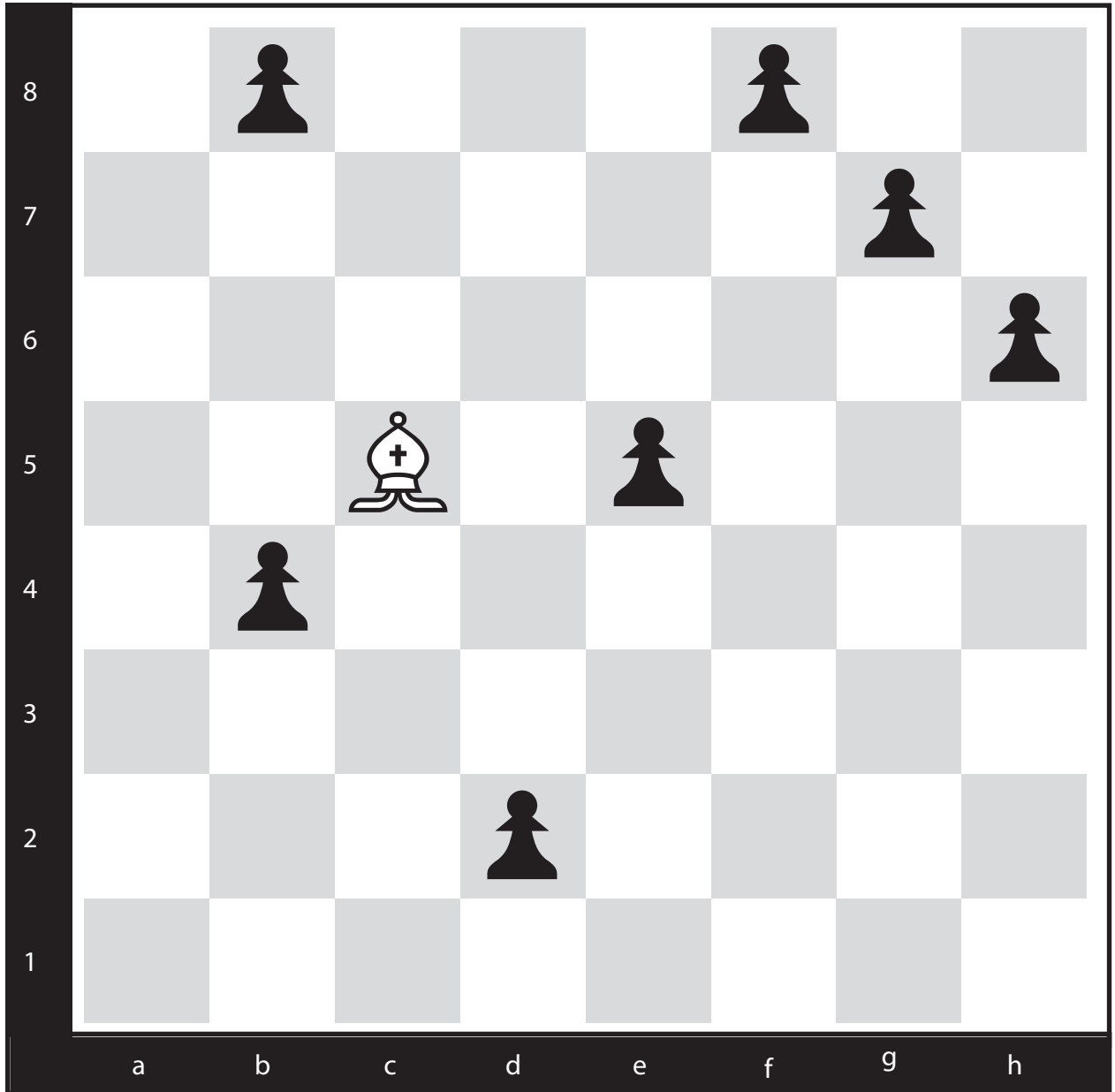
3. _____

6



4. _____

♞7



5. _____

9



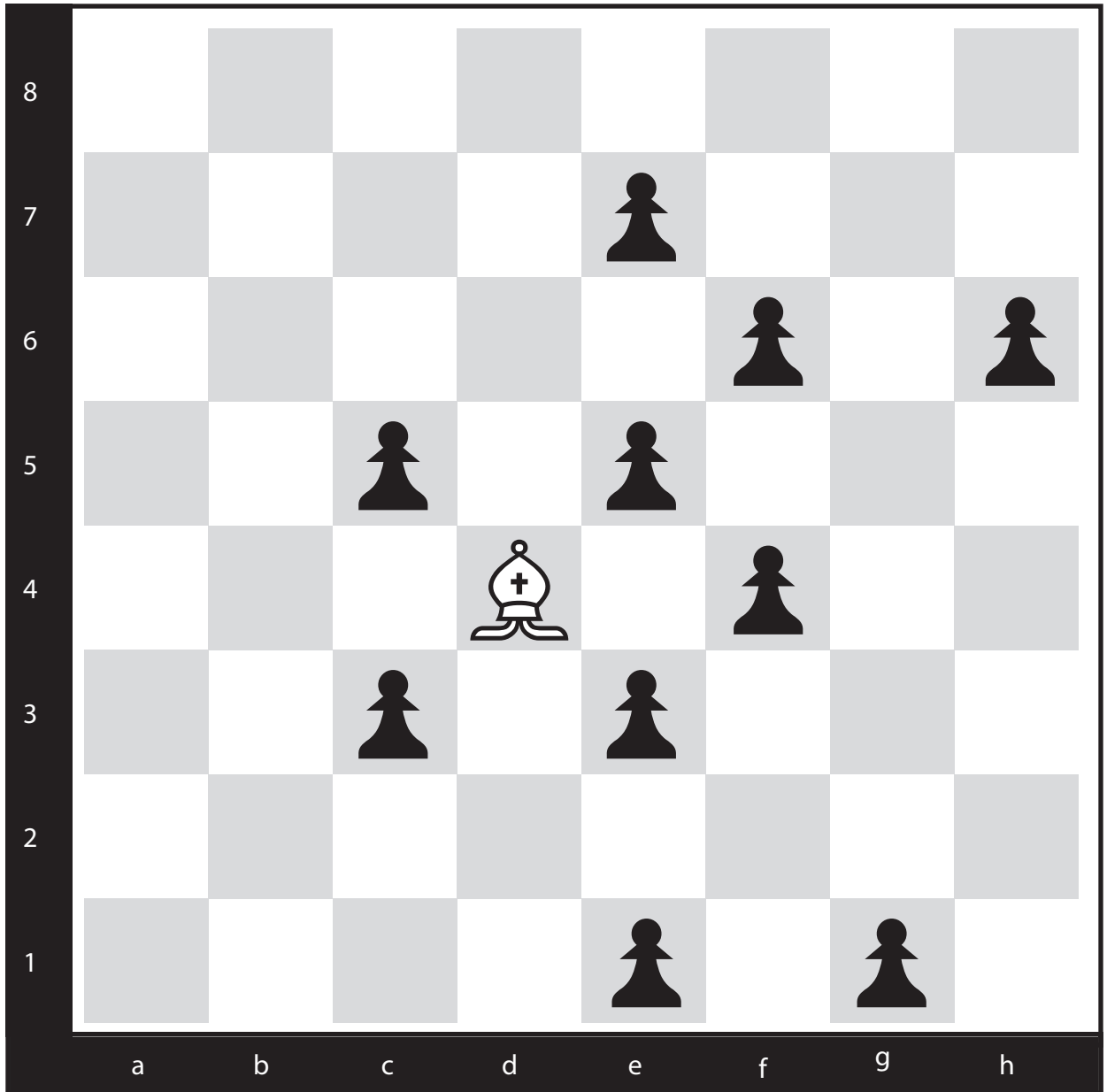
6.

9



7.

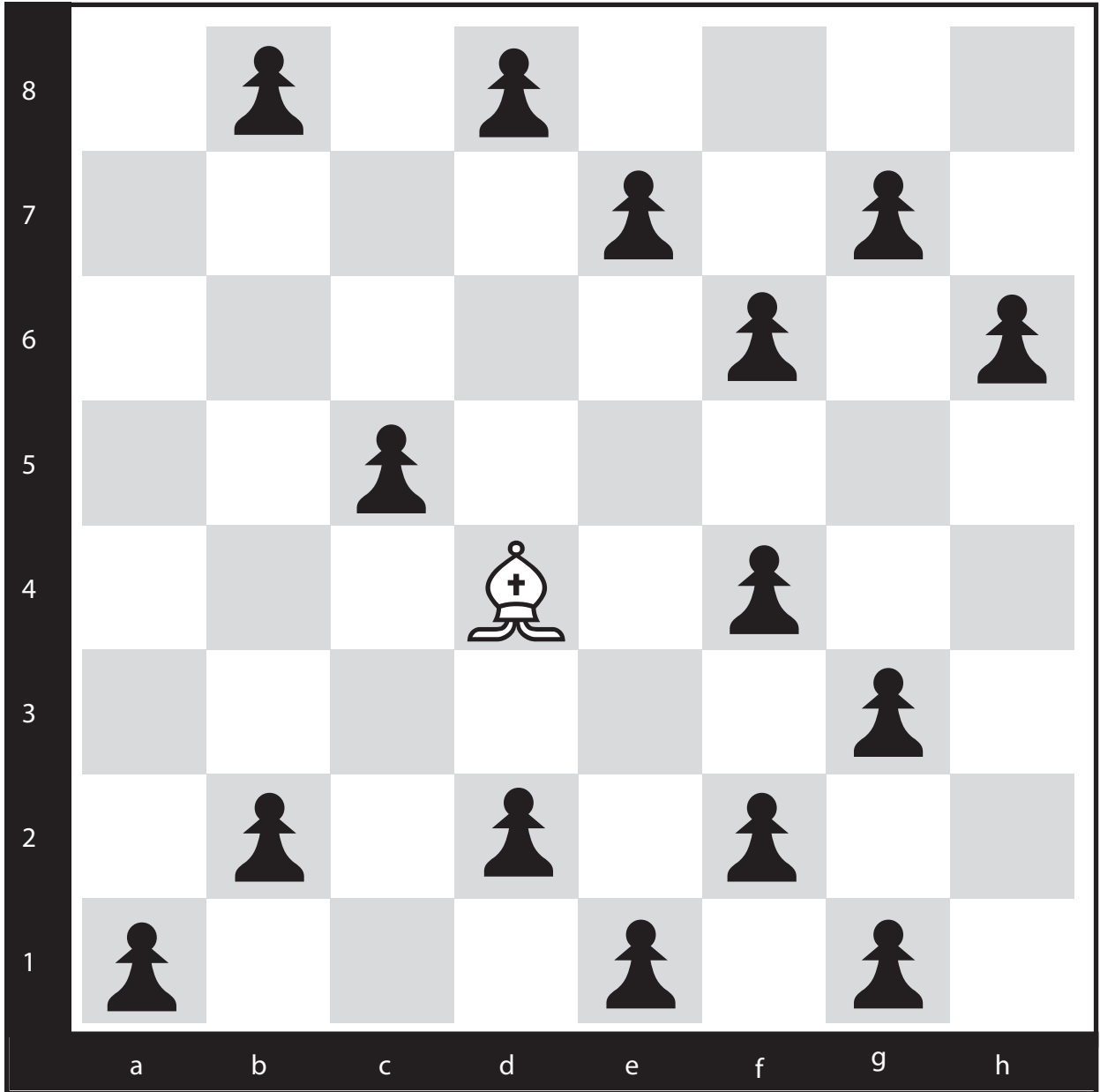
10



8.

_____	_____	_____	_____	_____
_____	_____	_____	_____	_____

15



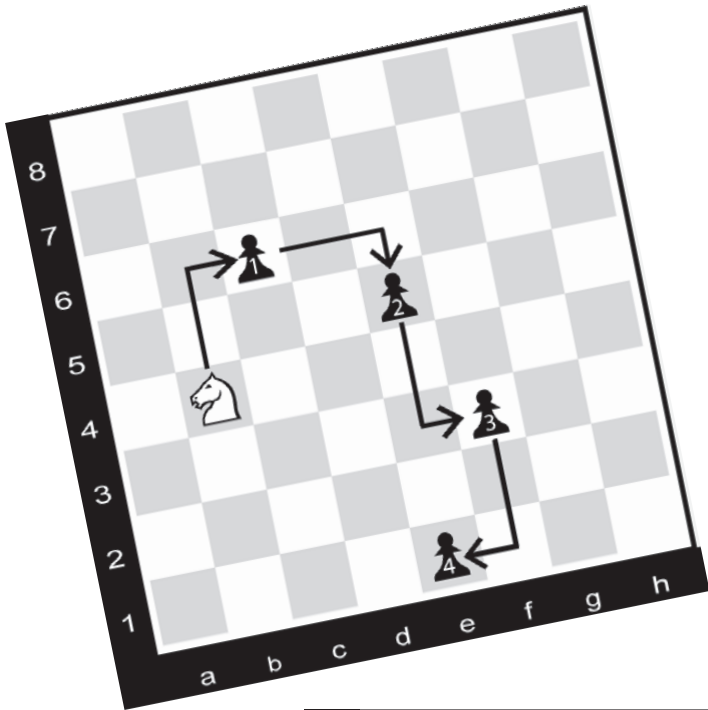
9.

ANSWERS FOR BISHOP PUZZLES

1. g4, e6, g8, d5, g2
2. e5, b8, g3, e1, a5
3. d8, e7, b4, f8, h6, f4
4. d3, f5, c8, h3, g2, a8
5. f8, b4, d2, h6, g7, e5, b8
6. a4, d7, h3, c8, b7, f3, d1, b3, c4
7. g7, e5, d6, g3, e1, b4, c5, b6, d8
8. e5, f4, h6, e3, g1, c5, e7, f6, c3, e1
9. f2, g1, c5, e7, d8, f6, b2, a1, g7, h6, f4, b8, g3, e1, d2

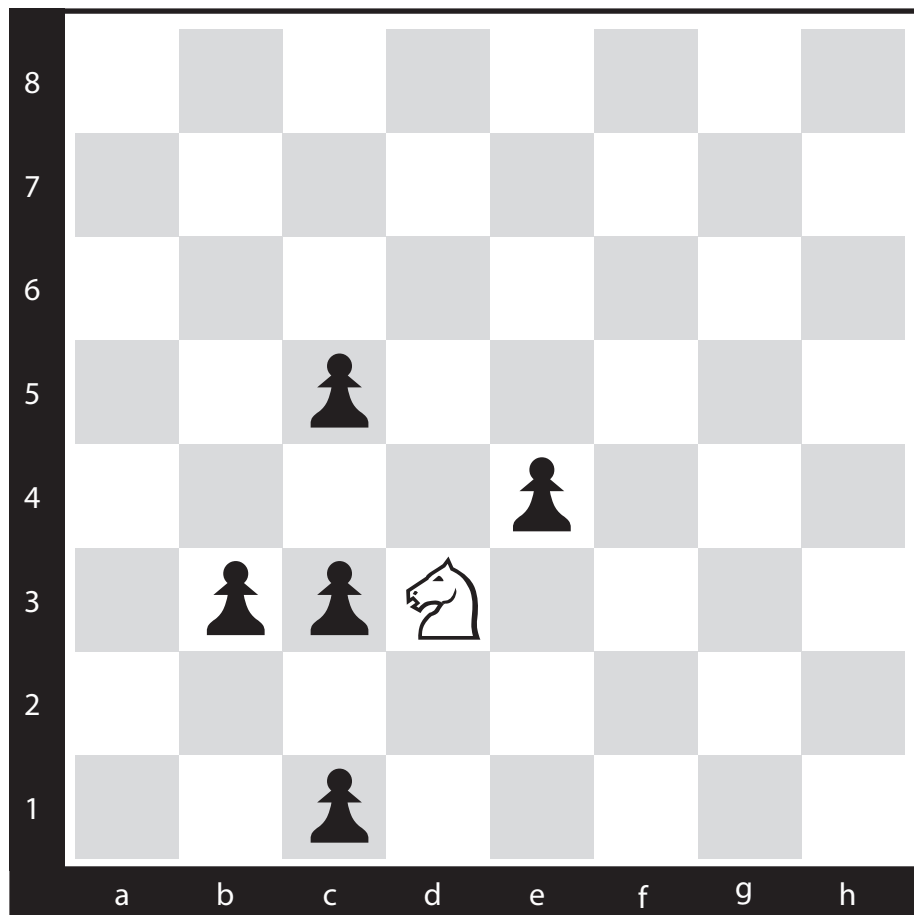
PAWN MOWER

KNIGHT INSTRUCTIONS



Use the knight to eliminate all the pawns on the board. A knight moves in an 'L-shape' (2 spaces in one direction, 1 space in another) in any direction. It can get rid of all four pawns by moving up two spaces and to the right one space, to the right two spaces and down one, down two spaces and right one, and, finally, down two and and to the left one space. Four pawns, four moves. An efficient way to describe this is by writing the moves out like this:

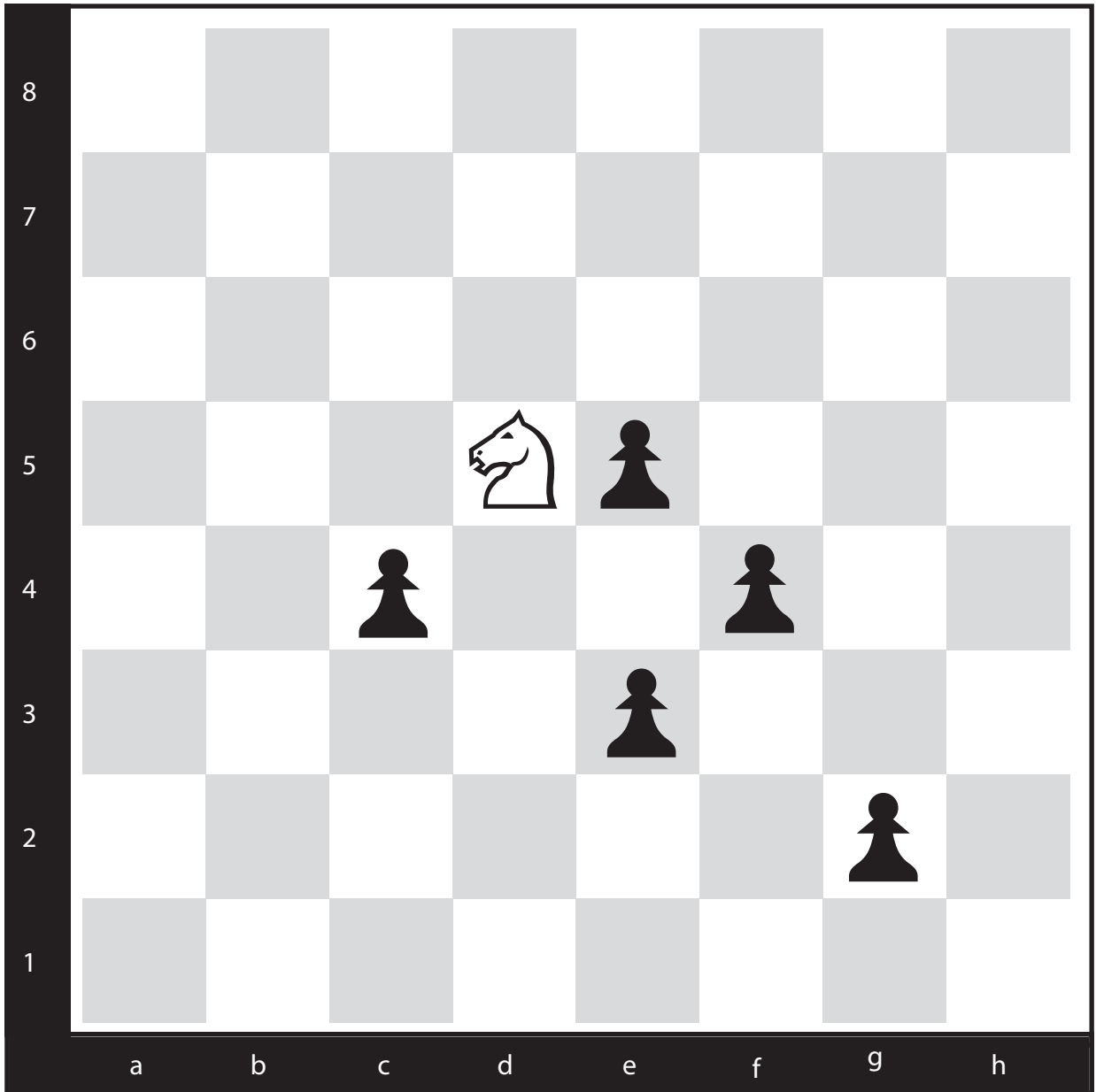
c6 e6 f3 e5



S
A
M
P
L
E
P
U
N
Z
L
E
S

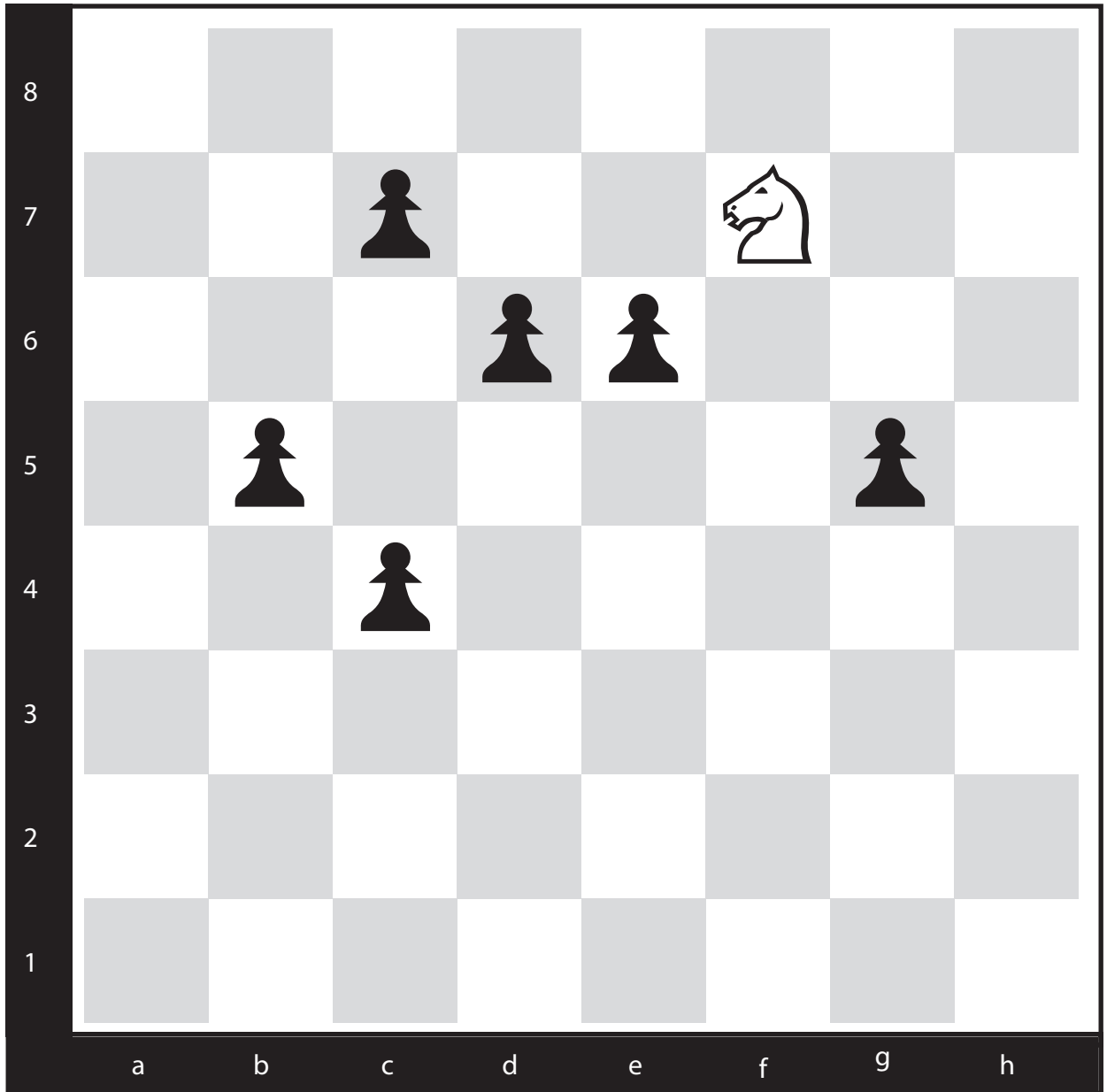
1. _____

5



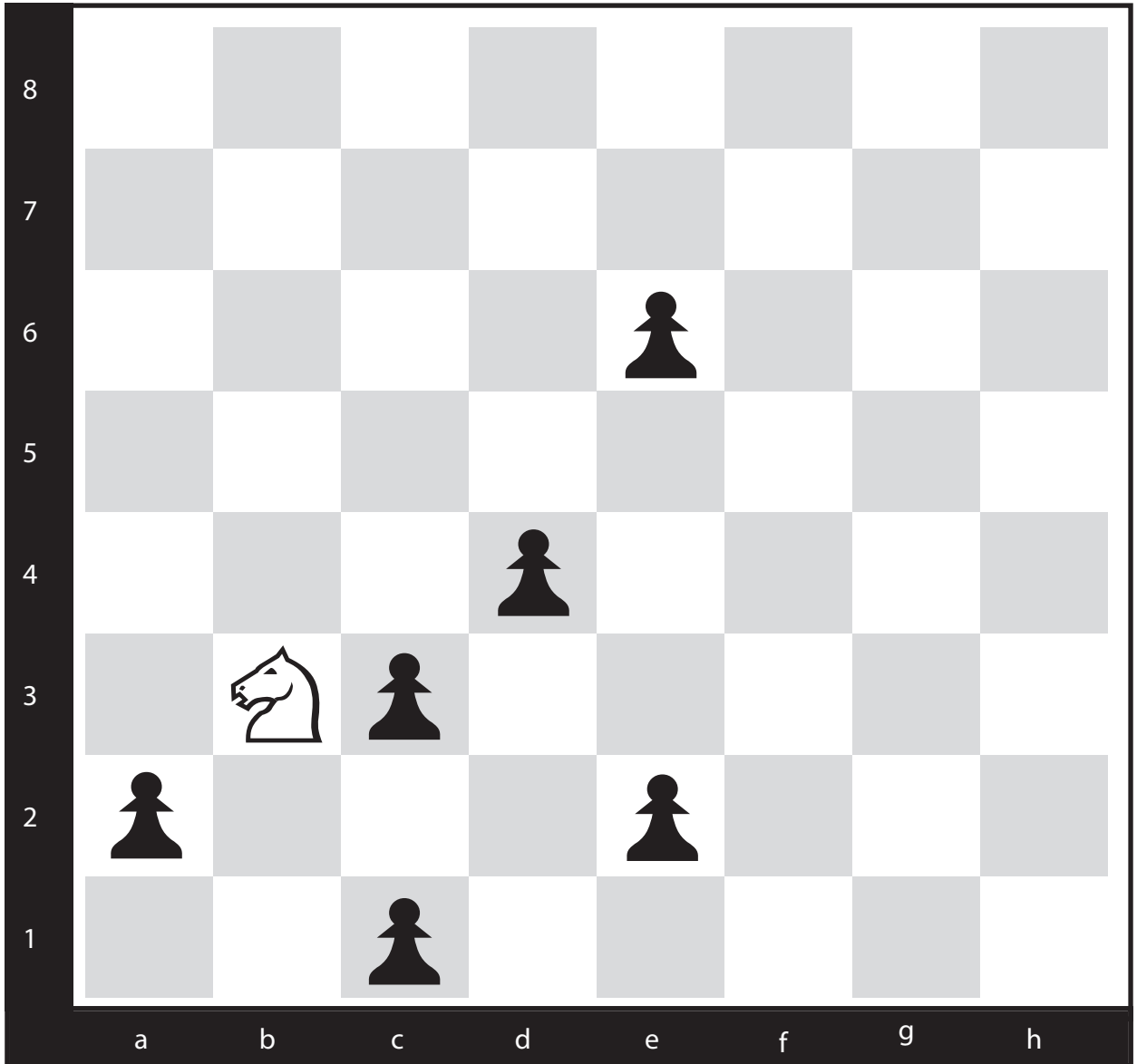
2.

6



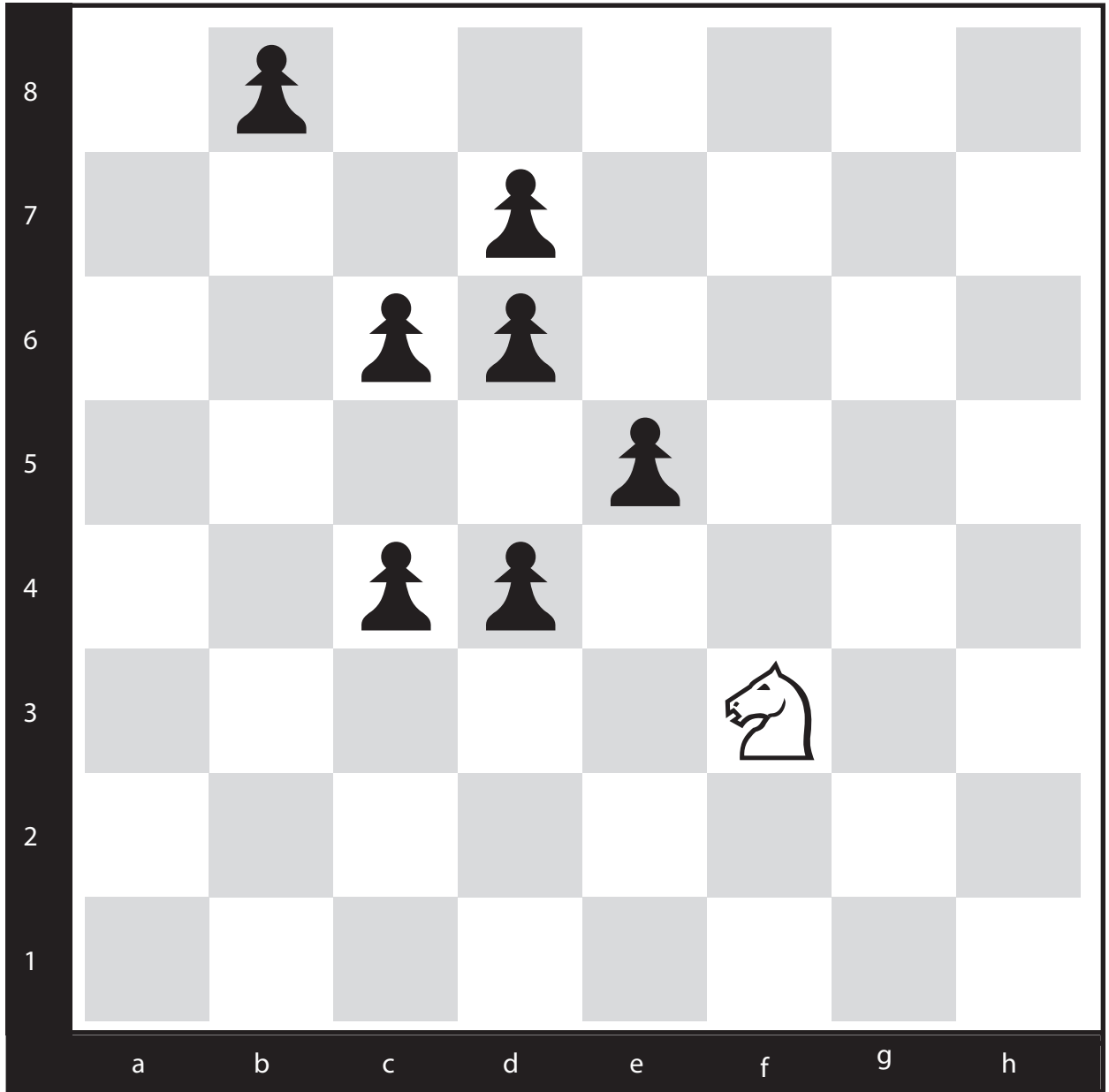
3. _____

Knight 6



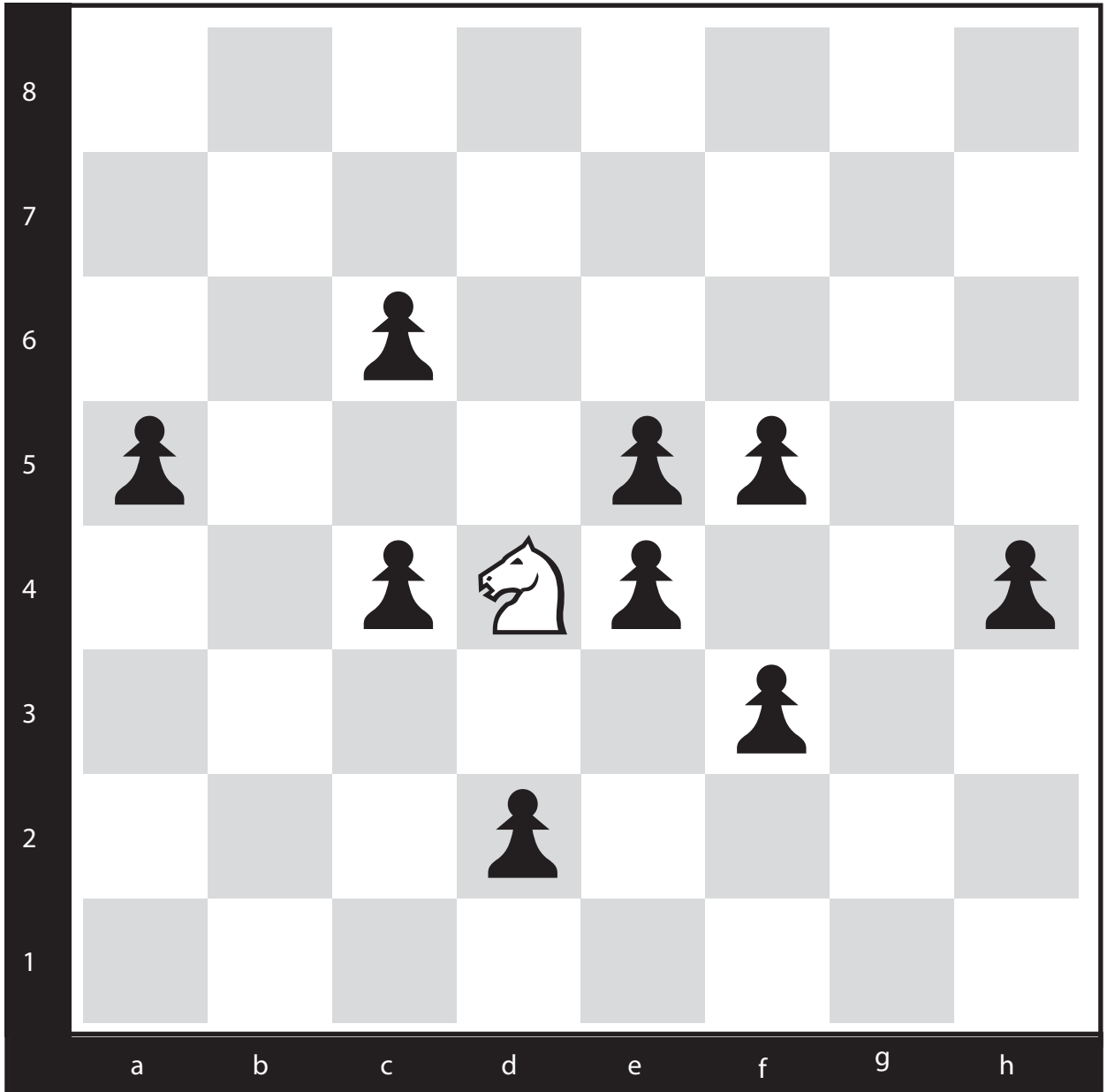
4. _____

Knight 7



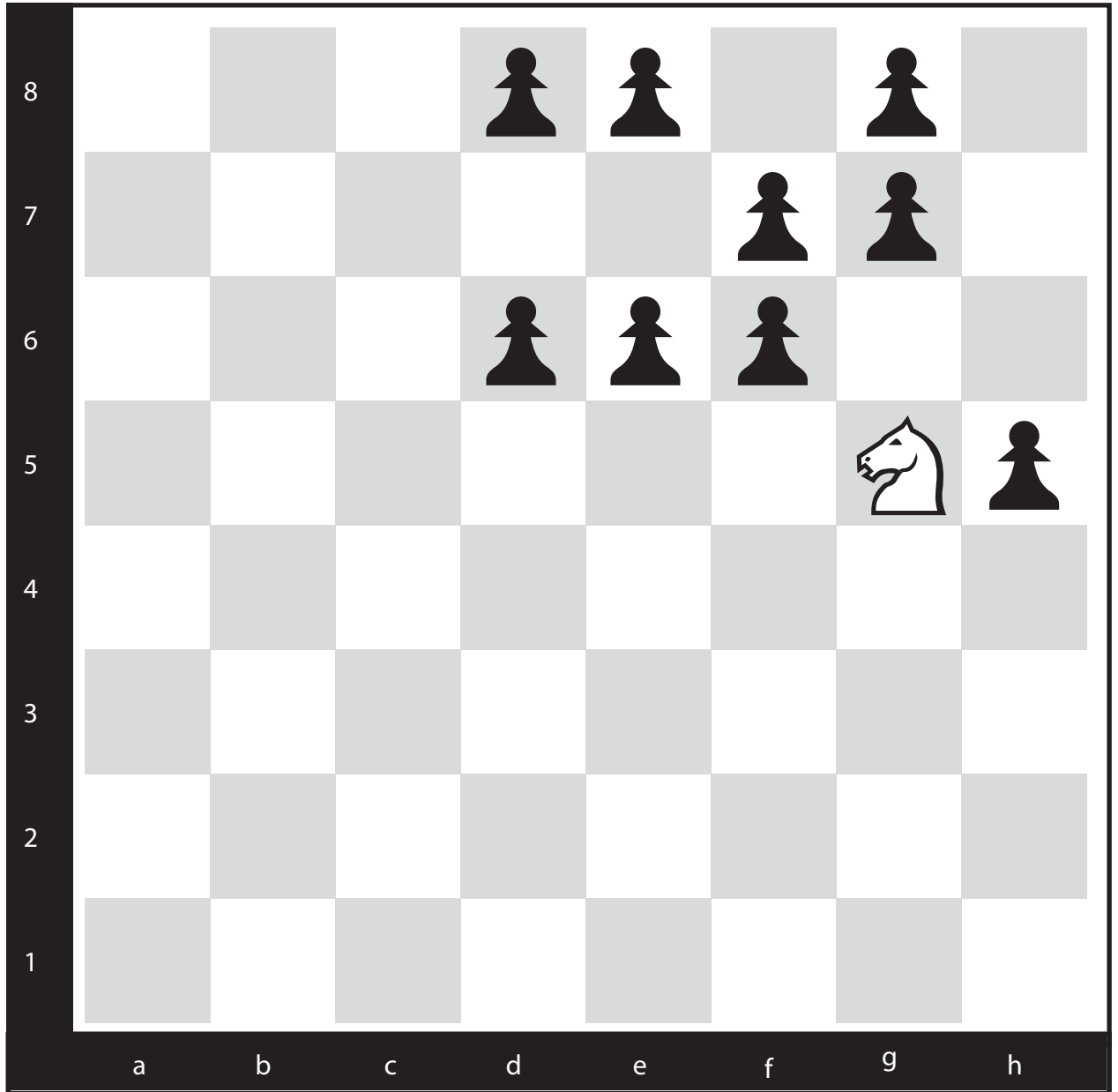
5. _____

19



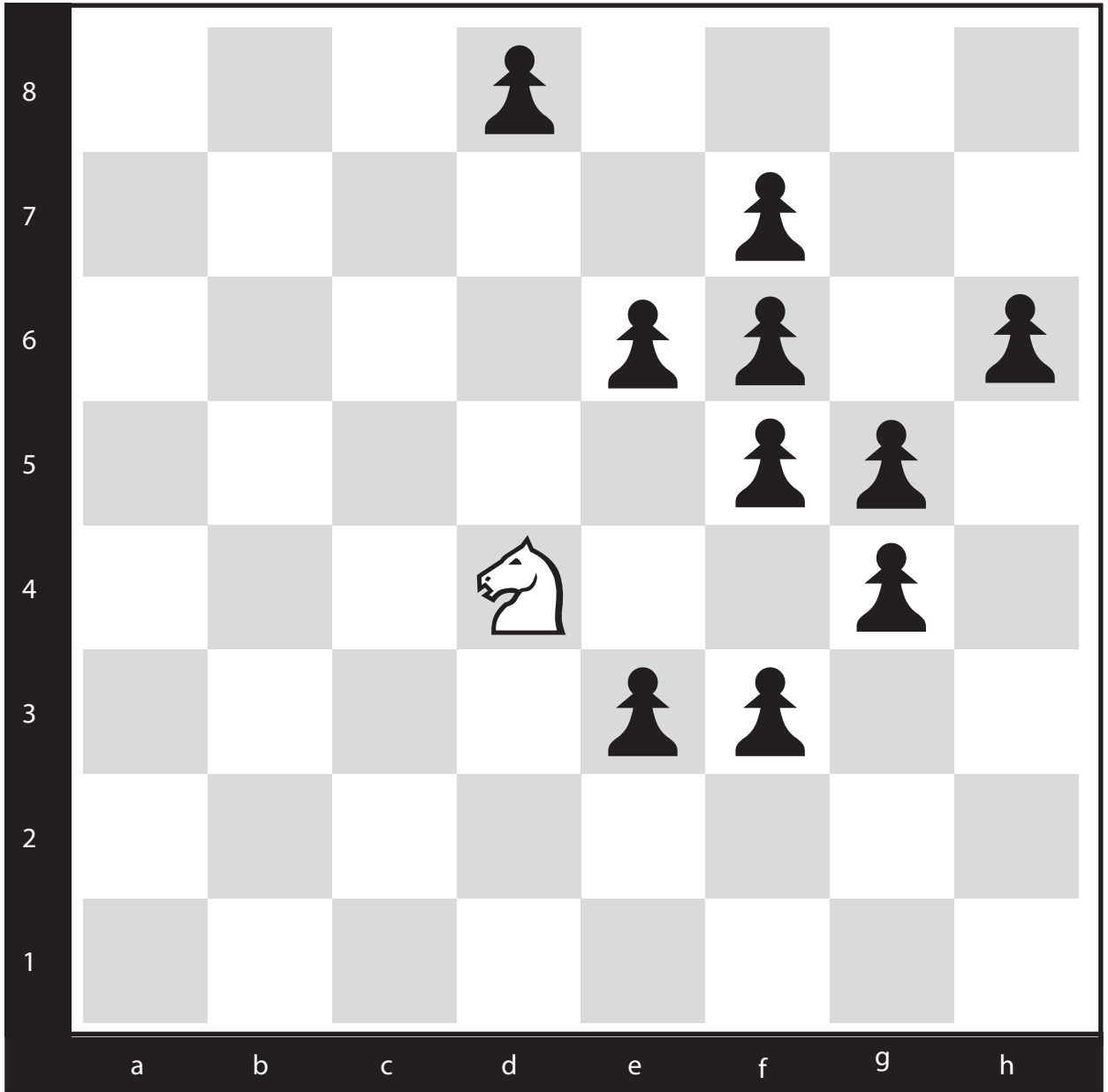
6.

Knight 9



7.

10



8.

♞18



9.

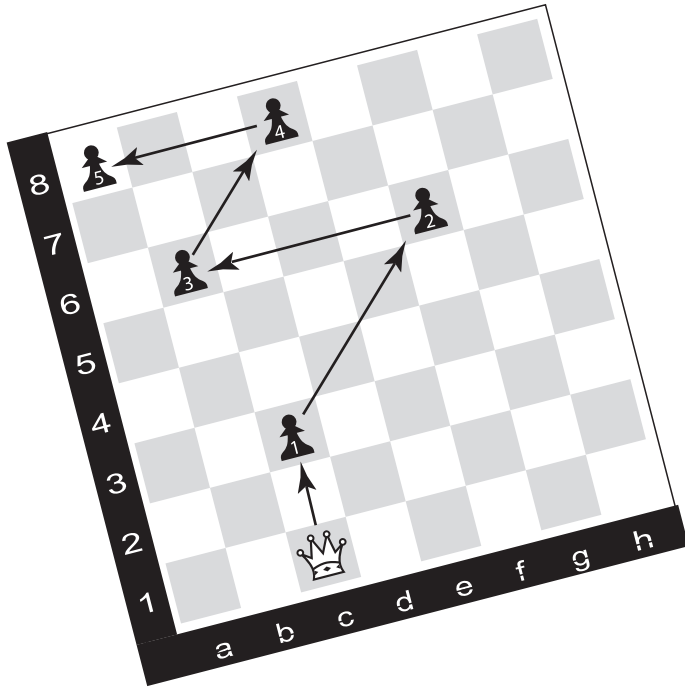
_____	_____	_____	_____	_____	_____
_____	_____	_____	_____	_____	_____
_____	_____	_____	_____	_____	_____

ANSWERS FOR KNIGHT PUZZLES

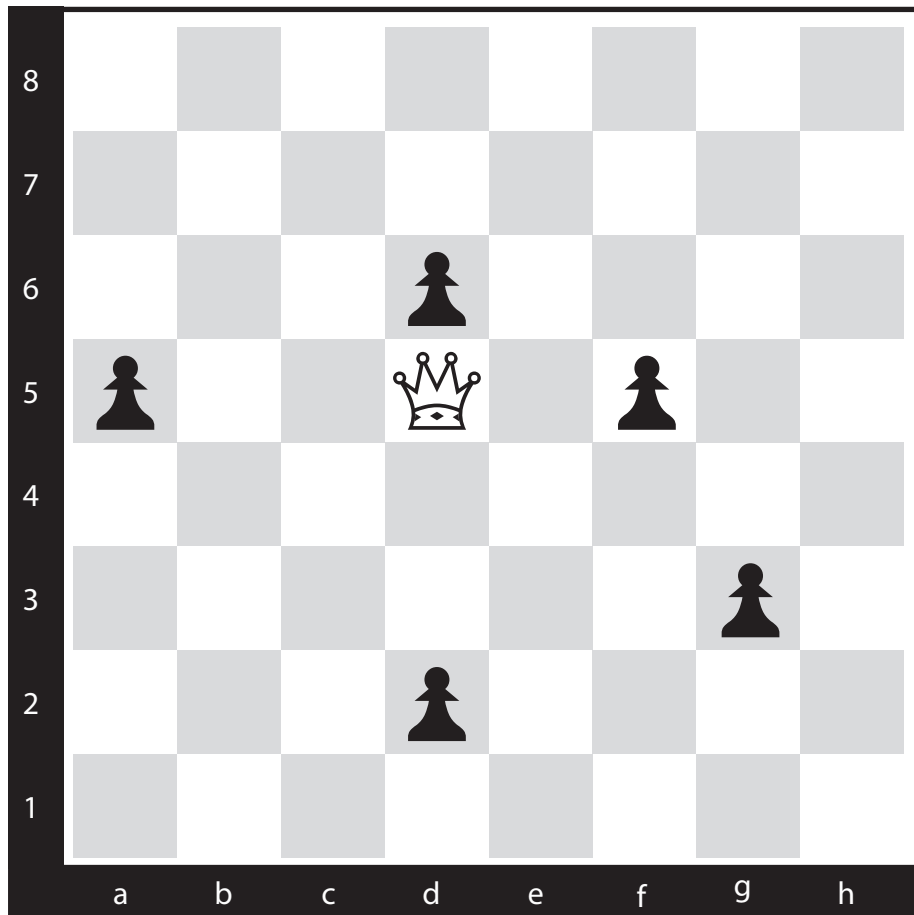
1. c1, b3, c5, e4, c3
2. f4, g2, e3, c4, e5
3. g5, e6, c7, b5, d6, c4
4. c1, a2, c3, e2, d4, e6
5. d4, c6, b8, d7, e5, c4, d6
6. f5, h4, f3, e5, c6, a5, c4, d2, e4
7. e6, d8, f7, d6, e8, g7, h5, f6, g8
8. f3, g5, e6, d8, f7, h6, f5, e3, g4, f6
9. c5, b3, d4, c6, e5, c4, d6, f5, g3, f1, d2, f3, g5, h3, f2, d1, e3, g2

PAWN MOWER

QUEEN INSTRUCTIONS



Use the queen to eliminate all the pawns on the board. A queen moves horizontally, vertically, and diagonally, in any direction. It can get rid of all five pawns by moving up, then diagonally up and right, then left, then diagonally up and right, and finally, left. Five pawns, five moves. An efficient way to describe this is by writing the moves out like this: c3 f6 b6 d8 a8

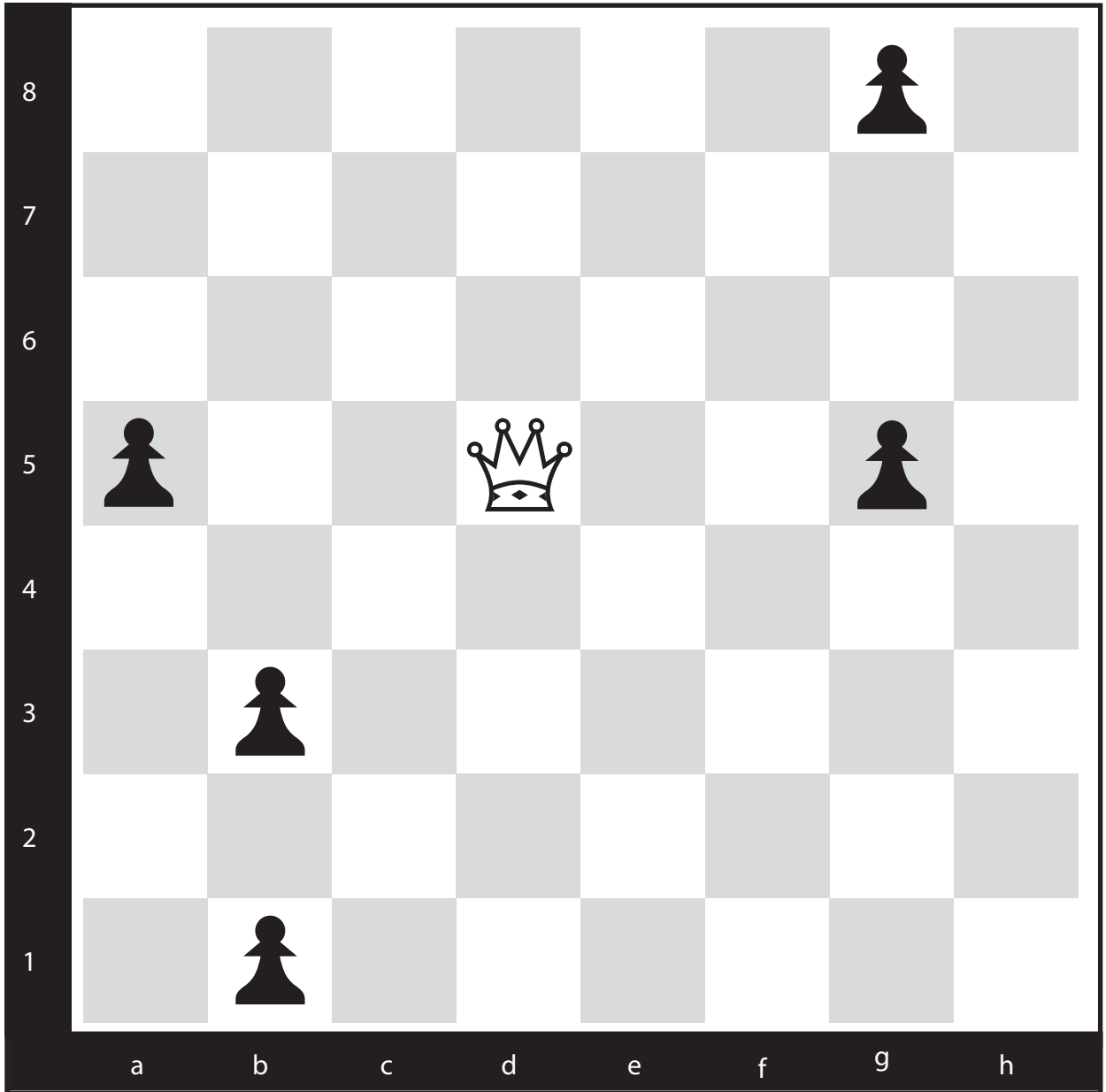


S
A
M
P
L
E

P
U
N
Z
L
E
S

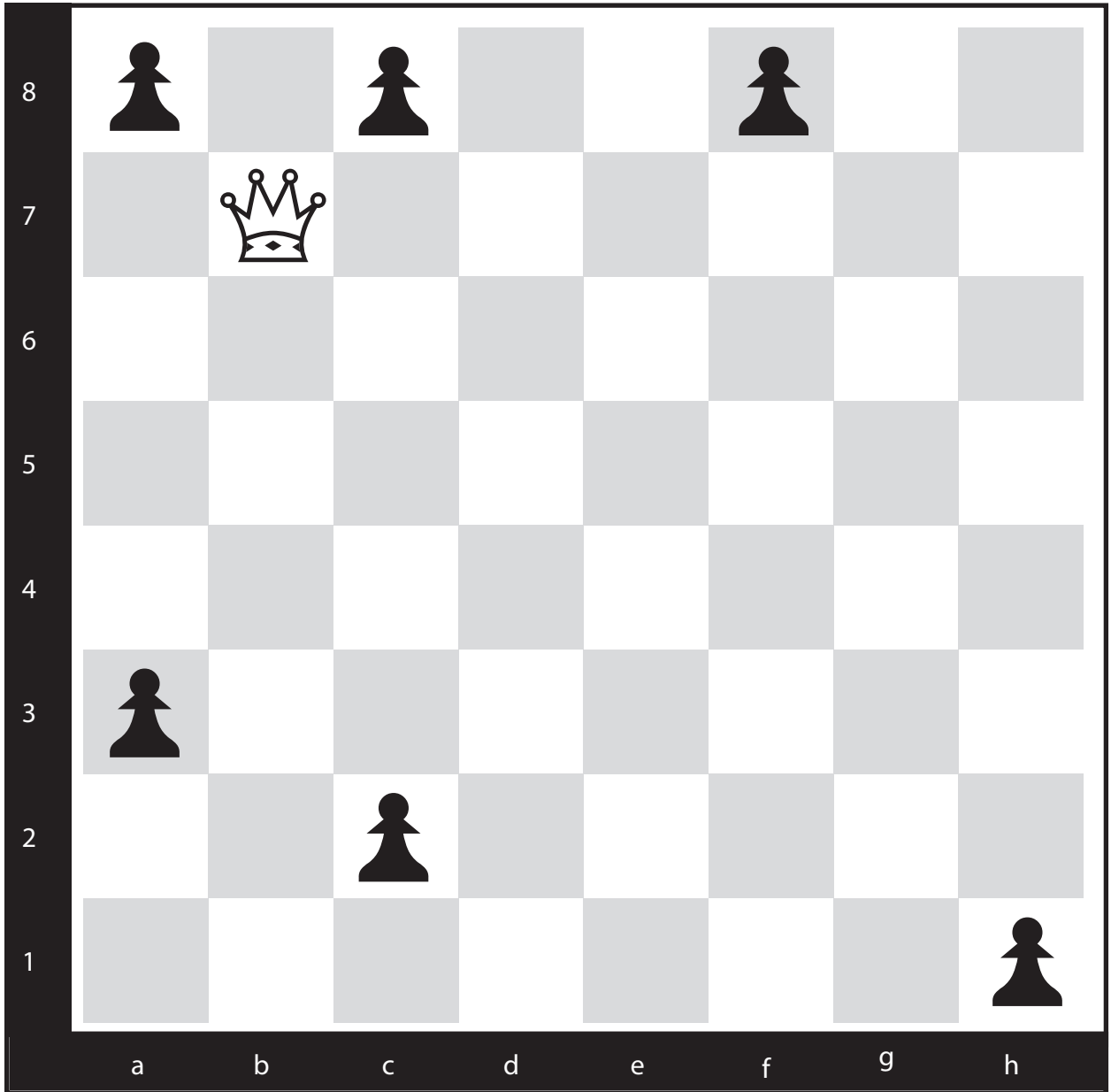
1. _____

♔5



2.

♔6



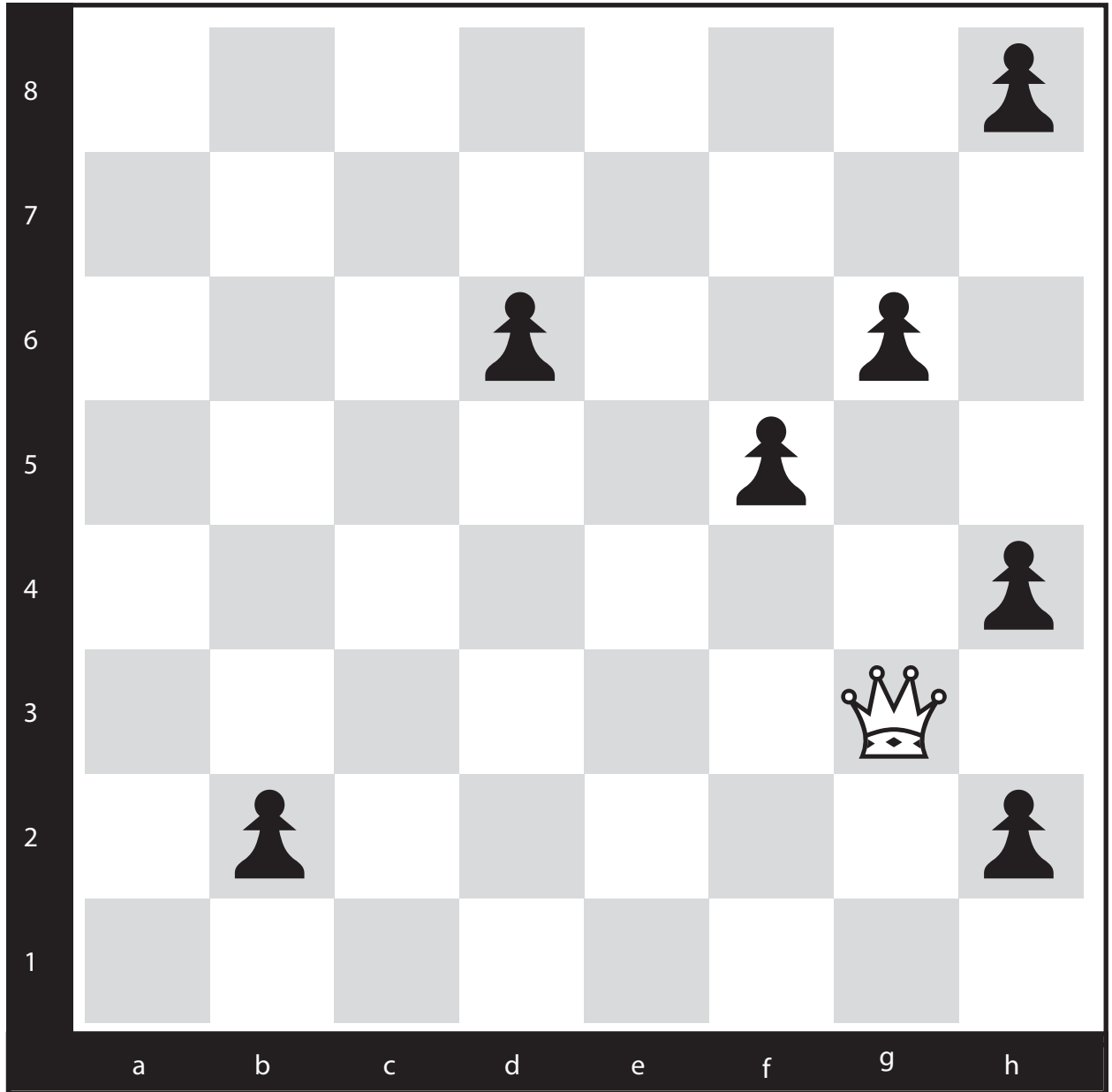
3. _____

6



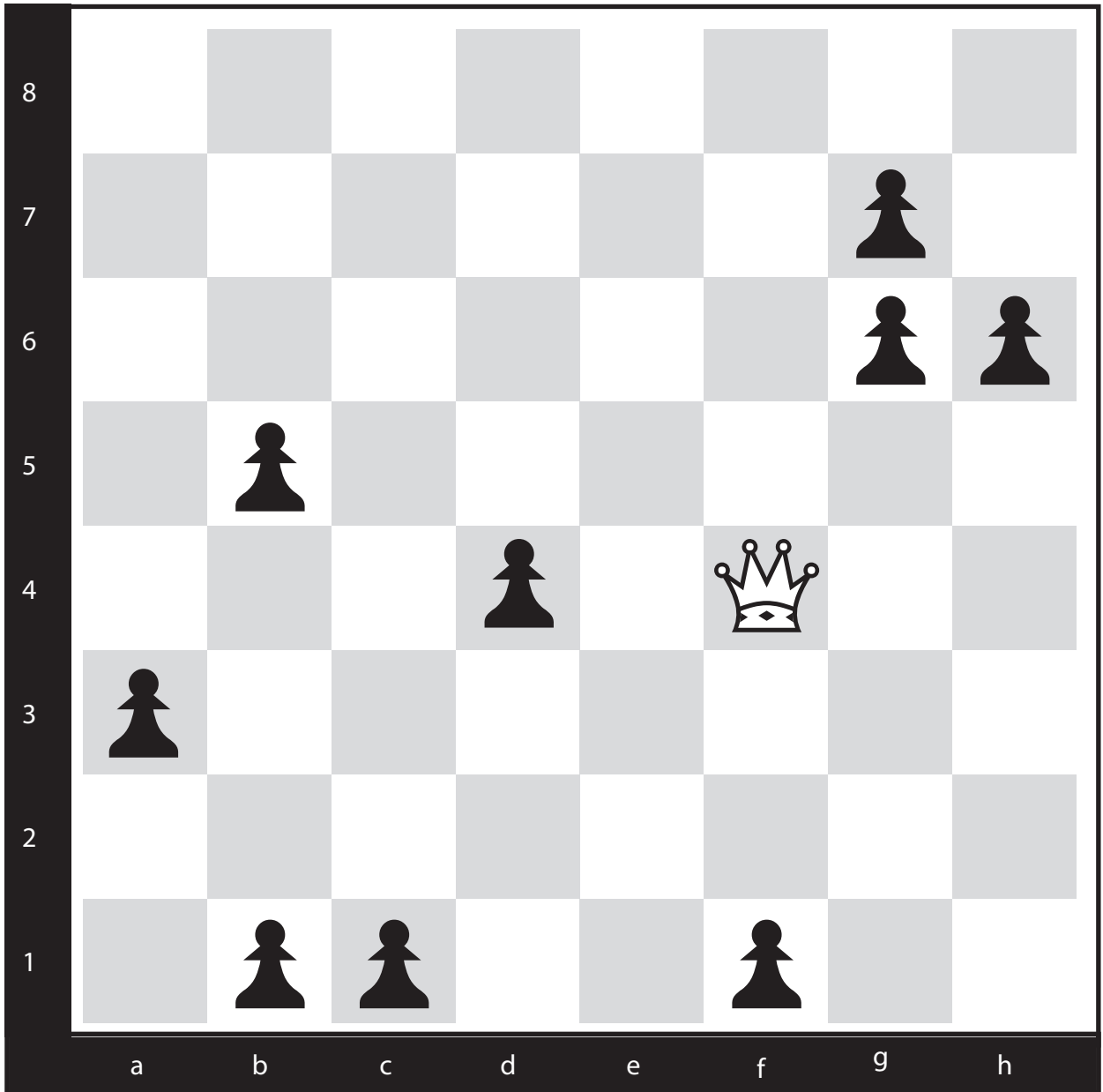
4. _____

♔7



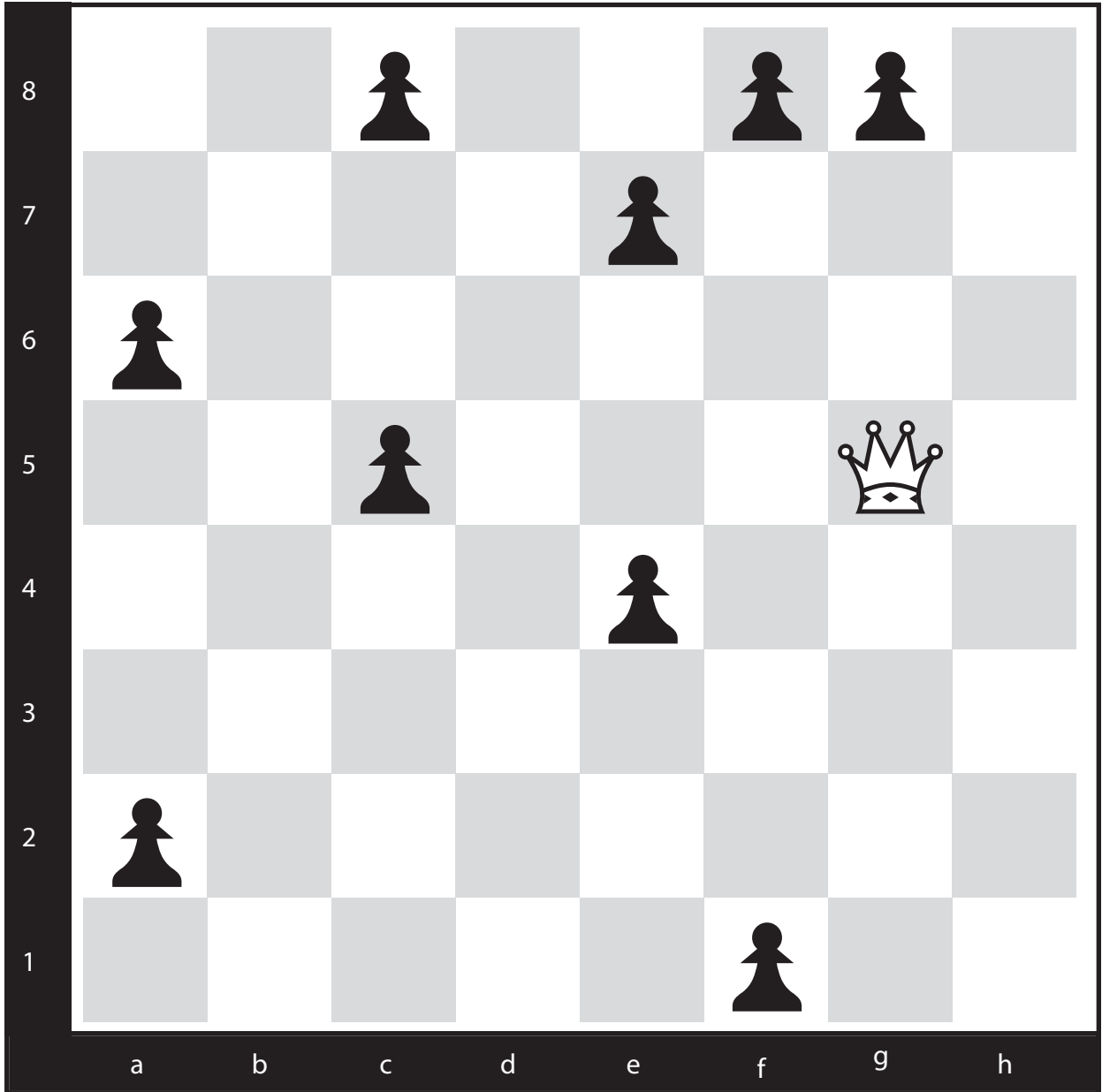
5. _____

9



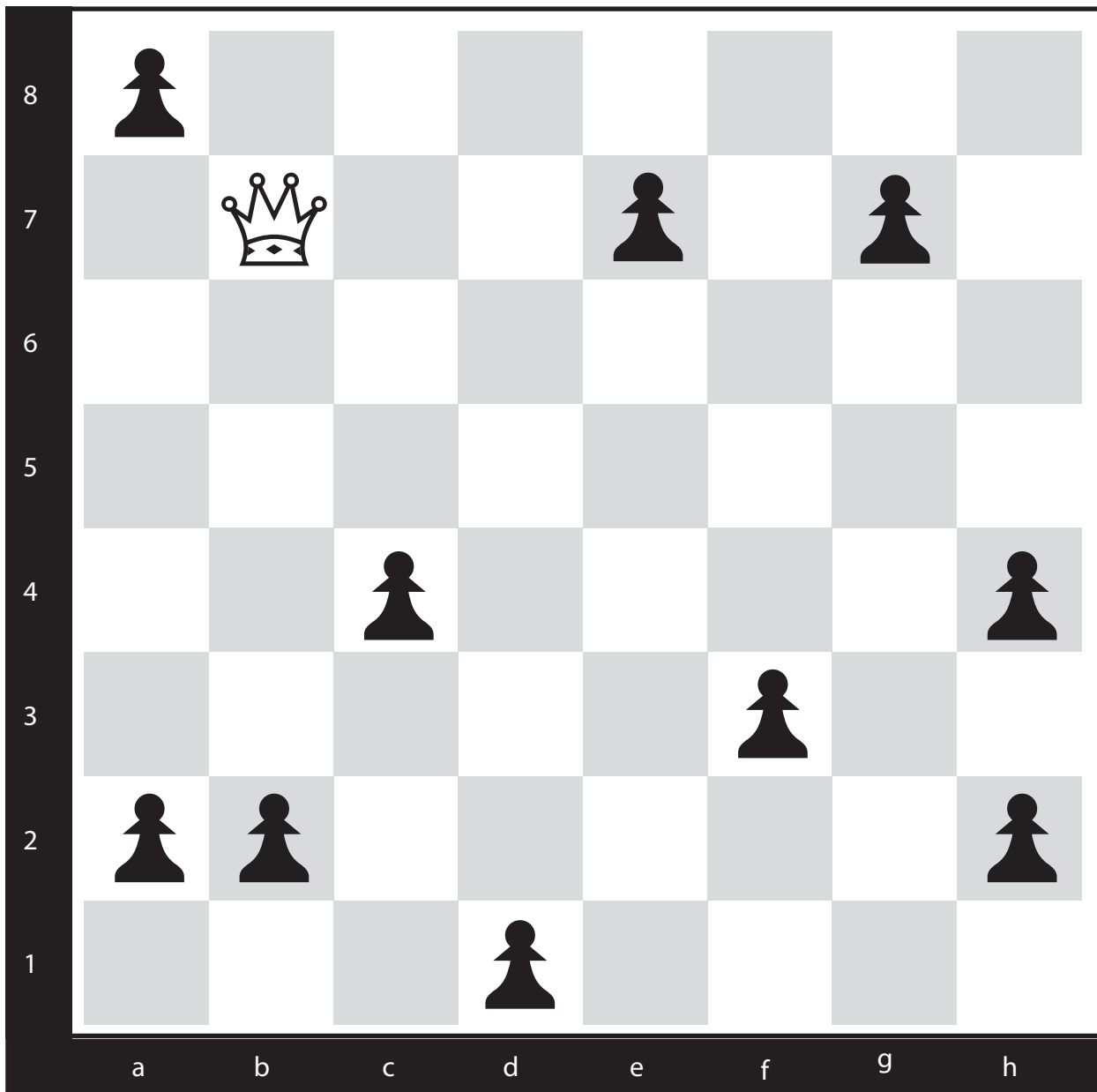
6.

9



7.

10



8.

11



9. _____

ANSWERS FOR QUEEN PUZZLES

1. f5, a5, d2, d6, g3
2. a5, g5, g8, b3, b1
3. h1, a8, a3, f8, c8, c2
4. d5, d1, d8, g5, a5, a3
5. h4, h8, b2, h2, d6, g6, f5
6. d4, g7, h6, g6, b1, b5, f1, c1, a3
7. g8, a2, a6, f1, f8, c8, c5, e7, e4
8. e7, g7, b2, h2, h4, c4, a2, a8, f3, d1
9. c1, c5, e5, e6, b3, b7, c6, g6, h7, h4, d8